

The 14 international prevention sections and their chairmanships



Agriculture

Agriculture Social Insurance Fund (KRUS)

Chemical Industry

Berufsgenossenschaft Rohstoffe und chemische Industrie (BG RCI)



Construction Industry

Berufsgenossenschaft der Bauwirtschaft (BG BAU)

Culture of Prevention

Occupational Safety and Health Agency (KOSHA)



Education and Training

Institution of Occupational Safety and Health (IOSH)

Electricity, Gas and Water

Berufsgenossenschaft Energie Textil Elektro Medienerzeugnisse (BG ETEM)



Health Services

Berufsgenossenschaftlicher für Gesundheitsdienst und Wohlfahrtspflege (BGW)

Information

"Employees' State Insurance Corporation" (ESIC) in the Ministry of Labour & Employment, Government of India



Iron and Metal Industry

Allgemeinen Unfallversicherungsanstalt (AUVA)

Machine and System Safety

Berufsgenossenschaft Nahrungsmittel und Gaststätten (BGN)



Mining Industry

Berufsgenossenschaft Rohstoffe und chemische Industrie (BG RCI)

Research

Deutsche Gesetzliche Unfallversicherung (DGUV)



Trade, Goods Logistics and Port Handling

MOM Academy School of Regulation (Singapore)

Transportation

Finnish Worker's Compensation Center (Tapaturmavakuutuskeskus-TVK)



Section's organization

Chairmanship and General Secretariat

**Berufsgenossenschaft der Bauwirtschaft,
Cologne, Germany**

Members of the Board

**Caisse de Sécurité Sociale,
Dakar, Senegal**

**Cámara Chilena de la Construcción
Santiago de Chile, Chile**

**Center for Construction Research and Training (CPWR),
Seattle, USA**

Constructiv, Brussels, Belgium

**Korea Occupational Safety and Health Agency (KOSHA),
Ulsan, Korea**

**Organisme Professionnel de Prévention du Bâtiment et des
Travaux Publics (OPPBTP), Boulogne Billancourt, France**

TU Delft Safety and Security Institute, Delft, The Netherlands

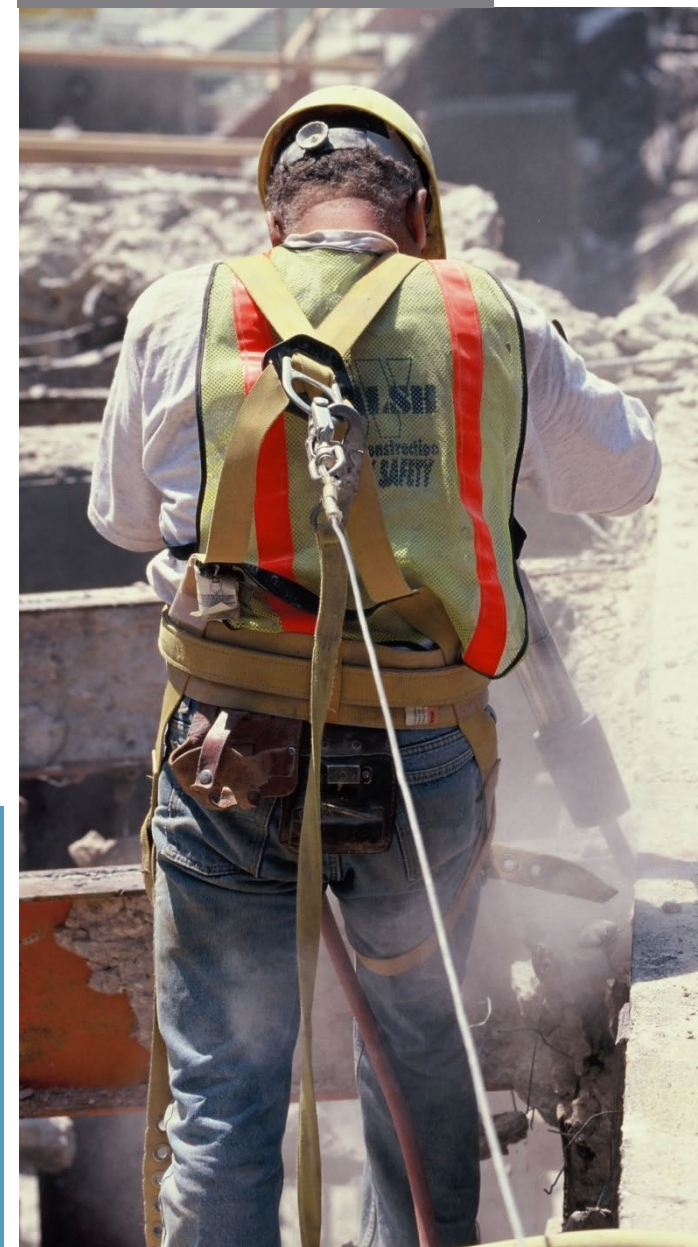
Secretariat ISSA Construction

c/o BG BAU – Berufsgenossenschaft der Bauwirtschaft
Eulenbergstraße 13-21
51065 Köln, Germany
T: + 49 221 9673 170

issa-c@bgbau.de

<https://www.issa.int/prevention-construction>

Status May 2022





INTERNATIONAL SOCIAL SECURITY ASSOCIATION
ASSOCIATION INTERNATIONALE DE LA SÉCURITÉ SOCIALE
ASOCIACIÓN INTERNACIONAL DE LA SEGURIDAD SOCIAL
INTERNATIONALE VEREINIGUNG FÜR SOZIALE SICHERHEIT

The International Social Security Association (ISSA) was founded in 1927 under the auspices of the International Labour Organization (ILO) and today unites 330 organizations from 158 countries worldwide.

ISSA promotes the development of social security globally through international cooperation.

ISSA offers its members knowledge, technical services and access to networks by organizing international conferences, collecting and disseminating information, supporting training, directing and promoting research, and collaborating with all interested stakeholders.

<https://www.issa.int>

VISION ZERO
Safety.Health.Wellbeing.

In 2017, ISSA launched the first ever global campaign to improve safety, health and wellbeing at work.

The Vision Zero campaign aims to engage employers, trade unions, governments and other stakeholders worldwide to systematically cut down on occupational injuries and diseases by investing in a healthy workforce.

www.visionzero.global

Section on Prevention in the Construction Industry



The Section on Prevention in the Construction Industry was founded in 1968 and is one of the fourteen International Sections on Prevention coordinated by the ISSA.

Our mission:

We work to defeat the common perception that construction is inherently hazardous by promoting best practices that are safe and healthful.

We show that safety and health performance is consistent with high quality, productivity and profitability.

We bring **Vision Zero** to the world of construction.

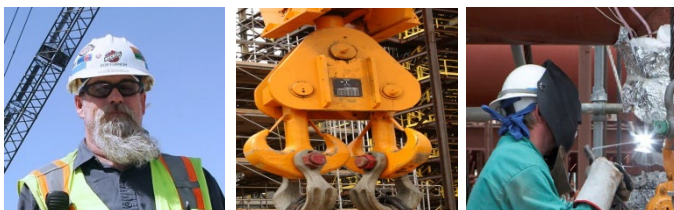
Our principles:

Our values are described in these documents:

- **The Declaration of Brussels**
- **The Declaration of Boston**
- **The Declaration of Berlin**

The documents can be found under:

<https://www.issa.int/prevention-construction/resources>



Our activities:

- Collect and publish best practices
- Establish performance measurements and benchmarks
- Develop safety and health strategies
- Support research activities
- Promote international networking
- Help small and medium enterprises (SME)

Our section is open to all member groups, such as:

- Clients
- Employers
- Workers
- Union representatives
- Company managers
- Project supervisors
- Regulators / inspectors
- Architects & designers
- Engineers
- Safety specialists
- Occupational psychologists
- Ergonomists
- Researchers

Apply for membership!

<https://www.issa.int/prevention-construction/membership>